

PVC inside diameter (mm)	size (inch)	ANSI outside diameter (mm)	diameter cns standard		BS outside diameter (mm)	JIS standard		DIN standard	
			outside diameter (mm)	wall thickness (mm)		outside diameter (mm)	wall thickness (mm)	outside diameter (mm)	wall thickness (mm)
10	3/8"	17.14	18±0.2	2.2±0.6	17.14	18±0.2	2.5±0.2	16±0.2	
15	1/2"	21.34	22±0.2	2.7±0.6	21.34	22±0.2	3.0±0.3	20±0.2	3.0±0.3
20	3/4"	26.67	26±0.2	2.7±0.6	26.67	26±0.2	3.0±0.3	25±0.2	3.0±0.3
25	1"	33.4	34±0.3	3.2±0.6	33.4	32±0.2	3.5±0.3	32±0.2	3.5±0.4
32	1+1/4"	42.16	42±0.3	3.2±0.6	42.16	38±0.3	3.5±0.3	40±0.2	3.5±0.4
40	1+1/2"	48.26	48±0.4	3.6±0.8	48.26	48±0.4	4.0±0.4	50±0.2	4.0±0.4
50	2"	60.32	60±0.5	4.1±0.8	60.32	60±0.5	4.5±0.4	63±0.3	4.5±0.4
65	2+1/2"	73.02	76±0.5	4.1±0.8	73.02	76±0.5	4.5±0.4	75±0.3	4.5±0.4
80	3"	88.9	89±0.5	5.1±0.8	88.9	89±0.5	5.9±0.4	90±0.3	5.9±0.4
100	4"	114.3	114±0.6	6.6±1.0	114.3	114±0.6	7.1±0.5	110±0.3	7.1±0.5
125	5"	141.3	140±0.8	7.5±1.2	141.3	140±0.8	7.5±0.5	140±0.4	7.5±0.5
150	6"	168.28	165±1.0	8.5±1.4	168.28	165±1.0	9.6±0.7	160±0.4	9.6±0.7
200	8"	219.08	216±1.3	10.5±1.4	219.08	216±1.3	11.0±0.7	225±0.5	11.0±0.7
250	10"	273.05	267±1.6	13.0±1.8	273.05	267±1.6	13.6±0.9	250±0.5	13.6±0.9



SAM-UK[®]

公称外径(De)		壁厚(MM)								长度 mm
		公称压力(Mpa)								
		PN1.00Mpa		PN1.25Mpa		PN1.60Mpa		PN2.00Mpa		
公称外径(De)	平均允许偏差	基本尺寸	公差	基本尺寸	公差	基本尺寸	公差	基本尺寸	公差	4000±10
16	+0.3 0					1.8	+0.5 0	2.2	+0.5 0	
20						2.3		2.8		
25	+0.3 0			2.3	+0.5 0	2.8	+0.5 0	3.5	+0.6 0	
32	+0.3 0	2.4	+0.5 0	3.0	+0.5 0	3.6	+0.6 0	4.4	+0.7 0	
40	+0.4 0	3.0	+0.5 0	3.7	+0.6 0	4.5	+0.7 0	5.5	+0.8 0	
50	+0.5 0	3.7	+0.6 0	4.6	+0.7 0	5.6	+0.8 0	6.9	+0.9 0	
63	+0.6 0	4.7	+0.7 0	5.8	+0.8 0	7.1	+1.0 0	8.7	+1.1 0	
75	+0.7 0	5.7	+0.8 0	6.9	+0.9 0	8.4	+1.1 0	10.3	+1.3 0	
90	+0.9 0	6.7	+0.9 0	8.2	+1.1 0	10.1	+1.3 0	12.3	+1.5 0	
110	+1.0 0	8.1	+1.1 0	10.1	+1.2 0	12.3	+1.5 0	15.1	+1.8 0	



Quality First, Customer Supreme
Keep the Company Improving and Make the
Products Perfect

Add: Toutuo Industrial Park, Huangyan, Taizhou, Zhejiang, China
Tel: 0086-576-84035982 84224545
Fax: 0086-576-84035983
Zip: 318020
E-mail: sales@zuo-xin.com
Http://www.zuo-xin.com Http://tzzxxy.en.alibaba.com/

台州市卓信塑业有限公司
TAIZHOU ZHUOXIN PLASTICS CO.,LTD



公司简介

COMPANY BRIEF INTRODUCTION

Taizhou Zhuoxin Plastics Co., Ltd. (SAM-UK), which was established in 2006, is a professional manufacturer of plastic construction materials. Our main products are PVC, PPR, PP pipes and fittings. Currently we mainly supply NBR 5648 standard, SCH40 ASTM D2466 standard, BS 4346 standard, ASTM D2665 standard, PP thread fittings, CPVC ASTM D2846 products etc.

Upholding the tenet of "quality first, customer supreme, innovation continues", we insist on producing with high technology and surviving on high quality.

As the company develops and becomes increasingly international, we are committed to absorb talents and prepare to bloom. We are winning more trust and better reputation from customers with the principles of market-orientation, surviving with quality, developing with technology and benefiting from efficient management.

Sincerely welcome domestic and overseas customers to visit our company for advising and cooperating.



THE CORPORATION'S HONOURS

Zhuoxin company wins certification many times which were issued by the authority organizations.

SCH40 PVC-U PIPE AND FITTINGS SERIES (ASTM D2466)



SAM-UK® SCH40 PVC-U PIPE AND FITTINGS SERIES (ASTM D2466)



COUPLING	SPECIFICATION
ITEM NO:AN01	1/2" 3/4" 1"
STANDARD:ASTM D2466	1 1/4" 1 1/2" 2" 2 1/2" 3" 4"



CAP	SPECIFICATION
ITEM NO:AN02	1/2" 3/4" 1"
STANDARD:ASTM D2466	1 1/4" 1 1/2" 2" 2 1/2" 3" 4"



TEE	SPECIFICATION
ITEM NO:AN03	1/2" 3/4" 1"
STANDARD:ASTM D2466	1 1/4" 1 1/2" 2" 2 1/2" 3" 4"



FEMALE ADAPTER	SPECIFICATION
ITEM NO:AN04	1/2" 3/4" 1"
STANDARD:ASTM D2466	1 1/4" 1 1/2" 2"



MALE ADAPTER	SPECIFICATION
ITEM NO:AN05	1/2" 3/4" 1"
STANDARD:ASTM D2466	1 1/4" 1 1/2" 2"



90 DEG ELBOW	SPECIFICATION
ITEM NO:AN06	1/2" 3/4" 1"
STANDARD:ASTM D2466	1 1/4" 1 1/2" 2" 2 1/2" 3" 4"



45DEG ELBOW	SPECIFICATION
ITEM NO:AN07	1/2" 3/4" 1"
STANDARD:ASTM D2466	11/4" 11/2" 2" 21/2" 3" 4"



FEMALE ELBOW	SPECIFICATION
ITEM NO:AN09	1/2" 3/4" 1"
STANDARD:ASTM D2466	



REDUCING BUSHING	SPECIFICATION
ITEM NO:AN11	3/4"x1/2" 1"x1/2" 1"x3/4" 11/4"x1"
STANDARD:ASTM D2466	11/2"x1" 11/2"x11/4" 2"x11/2" 2"x4" 3"x4" 2"x1" 2"x1-1/4" 11/2"x3/4" 3"x2" 2"x3/4"



REDUCING FEMALE ELBOW	SPECIFICATION
ITEM NO:AN13	3/4"x1/2" 1"x1/2"
STANDARD:ASTM D2466	1"x3/4"



FEMALE TEE	SPECIFICATION
ITEM NO:AN08	1/2" 3/4" 1"
STANDARD:ASTM D2466	



REDUCING TEE	SPECIFICATION
ITEM NO:AN10	3/4"x1/2" 1"x1/2" 1"x3/4"
STANDARD:ASTM D2466	



REDUCING COUPLING	SPECIFICATION
ITEM NO:AN12	3/4"x1/2" 1"x1/2" 1"x3/4" 1-1/4"x1"
STANDARD:ASTM D2466	1-1/4"x3/4" 1-1/2"x1-1/4" 1-1/2"x1" 2"x1-1/2" 2"x1-1/4" 2-1/2"x2" 2-1/2"x1-1/2" 3"x2-1/2" 3"x2" 4"x3" 4"x2-1/2" 2"x1"



REDUCING FEMALE TEE	SPECIFICATION
ITEM NO:AN14	3/4"x1/2" 1"x1/2"
STANDARD:ASTM D2466	1"x3/4"



REDUCING BUSHING (AN15)MIP*FIP	SPECIFICATION
ITEM NO:AN15	3/4"x1/2"
STANDARD:ASTM D2466	1"x1/2" 1"x3/4"



PIPE CLIP	SPECIFICATION
ITEM NO:AN17	1/2" 3/4" 1"
STANDARD:ASTM D2466	11/4" 11/2" 2" 3" 4"



UNION	SPECIFICATION
ITEM NO:AN19	1/2" 3/4" 1"
STANDARD:ASTM D2466	11/4" 11/2" 2"



COUPLING WITH BRASS	SPECIFICATION
ITEM NO:AN21	1/2" 3/4"
STANDARD:ASTM D2466	



PLUG	SPECIFICATION
ITEM NO:AN16	1/2" 3/4" 1"
STANDARD:ASTM D2466	11/4" 11/2" 2"



COMPRESSION COUPLING	SPECIFICATION
ITEM NO:AN18	1/2" 3/4" 1"
STANDARD:ASTM D2466	11/4" 11/2" 2" 21/2" 3" 4"



ELBOW WITH BRASS	SPECIFICATION
ITEM NO:AN20	1/2" 3/4"
STANDARD:ASTM D2466	



TEE WITH BRASS	SPECIFICATION
ITEM NO:AN22	1/2"
STANDARD:ASTM D2466	



DWV COUPLER	SPECIFICATION
ITEM NO:D01 STANDARD:ASTM D2665	1-1/2" 3" 2" 4" 6"



DWV 90DEG Elbow (II)	SPECIFICATION
ITEM NO:D02 STANDARD:ASTM D2665	3" 4"



DWV Y-TEE	SPECIFICATION
ITEM NO:D08 STANDARD:ASTM D2665	1-1/2" 2" 3" 4" 6"



DWV PLUG	SPECIFICATION
ITEM NO:D09 STANDARD:ASTM D2665	1-1/4" 1-1/2" 2" 3" 4" 6"



DWV 45DEG Elbow (II)	SPECIFICATION
ITEM NO:D03 STANDARD:ASTM D2665	1-1/2" 2" 3" 4" 6"



DWV 90DEG TEE (II)	SPECIFICATION
ITEM NO:D04 STANDARD:ASTM D2665	3" 4"



DWV VENT CAP	SPECIFICATION
ITEM NO:D10 STANDARD:ASTM D2665	2" 3" 4"



DWV TRIPPLE	SPECIFICATION
ITEM NO:D11 STANDARD:ASTM D2665	4"



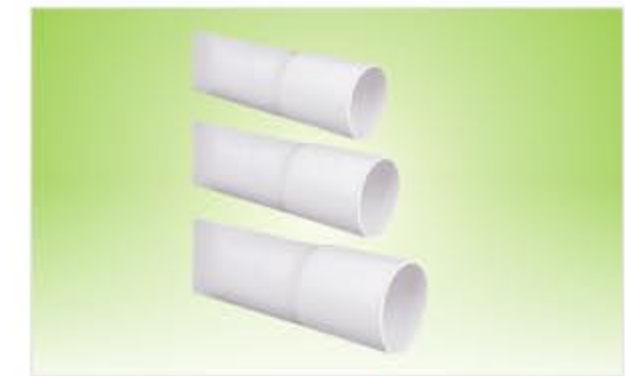
DWV TEE	SPECIFICATION
ITEM NO:D05 STANDARD:ASTM D2665	1-1/2" 2" 3" 4" 6"



DWV BEND	SPECIFICATION
ITEM NO:D06 STANDARD:ASTM D2665	1-1/2" 2" 3" 4" 6"



PVC PIPE	SPECIFICATION
STANDARD:ASTM D2466	1/2" 3/4" 1" 1-1/4" 1-1/2" 2" 3" 4" 6"



DWV PVE PIPE	SPECIFICATION
STANDARD:ASTM D2665	1/2" 3/4" 1" 1-1/4" 1-1/2" 2" 3" 4" 6"

PVC-U PRESSURE PIPE AND FITTINGS SERIES (DIN STANDARD)



SAM-UK

PVC-U PRESSURE PIPE AND FITTINGS SERIES (DIN STANDARD)



COUPLING	SPECIFICATION
ITEM NO:BN01 STANDARD:NBR5648	20 25 32 40 50 63



EQUAL TEE	SPECIFICATION
ITEM NO:BN02 STANDARD:NBR5648	20 25 32 40 50 63



REDUCING TEE	SPECIFICATION
ITEM NO:BN03 STANDARD:NBR5648	25x20 32x25 40x32



FEMALE COUPLING	SPECIFICATION
ITEM NO:BN04 STANDARD:NBR5648	20x1/2" 25x3/4" 32x1" 40x1-1/4" 50x1-1/2" 63x2" 25x1/2"



MALE ADAPTER	SPECIFICATION
ITEM NO:BN05 STANDARD:NBR5648	20x1/2" 25x3/4" 32x1" 40x1-1/4" 50x1-1/2" 63x2"



90 DEG ELBOW	SPECIFICATION
ITEM NO:BN06 STANDARD:NBR5648	20 25 32 40 50 63



FEMALE ELBOW	SPECIFICATION
ITEM NO:BN07 STANDARD:NBR5648	20x1/2" 25x3/4" 32x1"



REDUCING COUPLING	SPECIFICATION
ITEM NO:BN08 STANDARD:NBR5648	25x20 32x25 40x32



END CAP	SPECIFICATION
ITEM NO:BN13 STANDARD:NBR5648	20 25 32 40 50 63



45 DEG ELBOW	SPECIFICATION
ITEM NO:BN14 STANDARD:NBR5648	20 25 32 40 50 63



REDUCING ELBOW	SPECIFICATION
ITEM NO:BN09 STANDARD:NBR5648	25x20 32x25 40x25 40x32



UNION	SPECIFICATION
ITEM NO:BN10 STANDARD:NBR5648	20 25 32 40 50 63



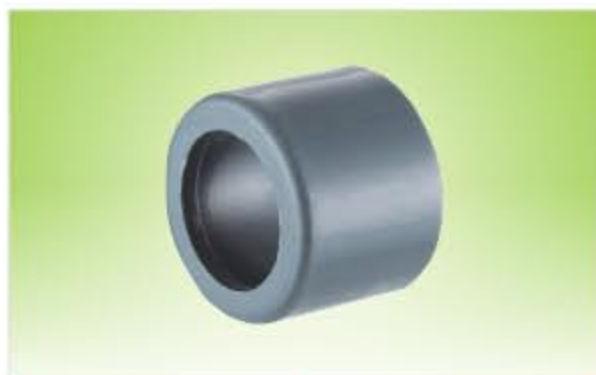
FEMALE SOCKET WITH BRASS	SPECIFICATION
ITEM NO:BN15 STANDARD:NBR5648	20x1/2" 25x3/4" 32x1"



FEMALE TEE WITH BRASS	SPECIFICATION
ITEM NO:BN16 STANDARD:NBR5648	20x1/2" 25x3/4" 32x1"



TANK ADAPTER	SPECIFICATION
ITEM NO:BN11 STANDARD:NBR5648	20x1/2" 25x3/4" 32x1" 40x1-1/4" 50x1-1/2" 63x2"



REDUCING RING	SPECIFICATION
ITEM NO:BN12 STANDARD:NBR5648	25x20 32x25 40x32 40x50 63x50



PVC VENT CAP	SPECIFICATION
ITEM NO:ZX903	50 75 110



PP BACKNUT	SPECIFICATION
ITEM NO:ZX901	32



REDUCING TEE WITH SOCKET	SPECIFICATION
ITEM NO:G01 STANDARD:NBR5688	75x50 110x50 110x75 160x110



TEE WITH SOCKET	SPECIFICATION
ITEM NO:G03 STANDARD:NBR5688	40 50 75 110 160



SKEW TEE WITH SOCKET	SPECIFICATION
ITEM NO:G05 STANDARD:NBR5688	50 75 110



REDUCING SKEW TEE WITH SOCKET	SPECIFICATION
ITEM NO:G07 STANDARD:NBR5688	110x50



ELBOW WITH SOCKET	SPECIFICATION
ITEM NO:G02 STANDARD:NBR5688	40 50 75 110 160



45DEG ELBOW WITH SOCKET	SPECIFICATION
ITEM NO:G04 STANDARD:NBR5688	50 75 110 160



SKEW CROSS WITH SOCKET	SPECIFICATION
ITEM NO:G06 STANDARD:NBR5688	110



REDUCING COUPLING	SPECIFICATION
ITEM NO:G08 STANDARD:NBR5688	110x50

PVC-U THREADED PIPE AND FITTINGS SERIES





FEMALE COUPLING	SPECIFICATION
ITEM NO:C01 END CONNECTOR:THREAD	1/2" 3/4" 1" 1-1/4" 1-1/2" 2"



FEMALE ELBOW	SPECIFICATION
ITEM NO:C02 END CONNECTOR:THREAD	1/2" 3/4" 1" 1-1/4" 1-1/2" 2"



FEMALE AND MALE ADAPTER	SPECIFICATION
ITEM NO:C07 END CONNECTOR:THREAD	3/4"x1/2" 1"x1/2" 1"x3/4" 1-1/4"x3/4" 1-1/4"x1" 1-1/2"x1-1/4" 1-1/2"x3/4" 1-1/2"x1" 2"x1" 2"x1-1/4" 2"x1-1/2"



MALE PLUG	SPECIFICATION
ITEM NO:C08 END CONNECTOR:THREAD	1/2" 3/4" 1" 1 1/4" 1 1/2" 2"



FEMALE TEE	SPECIFICATION
ITEM NO:C03 END CONNECTOR:THREAD	1/2" 3/4" 1" 1-1/4" 1-1/2" 2"



FEMALE REDUCING TEE	SPECIFICATION
ITEM NO:C04 END CONNECTOR:THREAD	3/4"x1/2" 1"x1/2" 1"x3/4"



FEMALE REDUCER	SPECIFICATION
ITEM NO:C09 END CONNECTOR:THREAD	3/4"x1/2" 1"x1/2" 1"x3/4"



FEMALE & MALE REDUCER	SPECIFICATION
ITEM NO:C10 END CONNECTOR:THREAD	3/4"x1/2" 1"x1/2" 1"x3/4"



MALE COUPLING	SPECIFICATION
ITEM NO:C05 END CONNECTOR:THREAD	1/2" 3/4" 1" 1-1/4" 1-1/2" 2"



MALE & FEMALE ELBOW	SPECIFICATION
ITEM NO:C06 END CONNECTOR:THREAD	1/2" 3/4" 1" 1-1/4" 1-1/2" 2"



FEMALE & MALE UNION	SPECIFICATION
ITEM NO:C11 END CONNECTOR:THREAD	1/2" 3/4" 1"



FEMALE UNION	SPECIFICATION
ITEM NO:C12 END CONNECTOR:THREAD	1/2" 3/4" 1" 1-1/4" 1-1/2" 2"



FEMALE UNION ELBOW	SPECIFICATION
ITEM NO:C13 END CONNECTOR:THREAD	1/2" 3/4" 1"



FEMALE & MALE UNION ELBOW	SPECIFICATION
ITEM NO:C14 END CONNECTOR:THREAD	1/2" 3/4" 1"



CLIP	SPECIFICATION
ITEM NO:C19 END CONNECTOR:THREAD	1/2" 3/4"



UNION WITH MOVABLE HEAD	SPECIFICATION
ITEM NO:C20 END CONNECTOR:THREAD	3/4"



REDUCING ELBOW	SPECIFICATION
ITEM NO:C15 END CONNECTOR:THREAD	1/2"x3/4"



ELBOW WITH BRASS	SPECIFICATION
ITEM NO:C16 END CONNECTOR:THREAD	1/2" 3/4" 1/2"x3/4"



MALE & FEMALE UNION CONNECTOR	SPECIFICATION
ITEM NO:C21 END CONNECTOR:THREAD	1/2" 3/4" 1" 1-1/4" 1-1/2" 2"



ELBOW WITH PLATE	SPECIFICATION
ITEM NO:C22 END CONNECTOR:THREAD	1/2"



MALE REDUCER	SPECIFICATION
ITEM NO:C17 END CONNECTOR:THREAD	3/4"x1/2" 1"x1/2" 1"x3/4"



FEMALE CAP	SPECIFICATION
ITEM NO:C18 END CONNECTOR:THREAD	1/2" 3/4" 1" 1 1/4" 1 1/2" 2"



BS WATER SUPPLY PIPES	SPECIFICATION
END CONNECTOR:THREAD	1/2"x2.77 3/4"x2.87 1"x3.38 1-1/4"x3.56 1-1/2"x3.68 2"x3.91 2"x4.2 2-1/2"x5.16 3"x5.49 3"x5.7 4"x6.02 4"x7.3



FLEXIBLE	SPECIFICATION
ITEM NO:C23	1/2"x30cm 1/2"x40cm 1/2"x50cm 1/2"x60cm

PP THREADED PIPE AND FITTINGS SERIES



SAM-UK

PP THREADED PIPE AND FITTINGS SERIES



PP FEMALE TEE	SPECIFICATION
ITEM NO:H01	1/2" 3/4" 1" 1 1/4" 1 1/2" 2"



PP FEMALE ELBOW	SPECIFICATION
ITEM NO:H02	1/2" 3/4" 1" 1 1/4" 1 1/2" 2"



PP UNIVERSAL UNION	SPECIFICATION
ITEM NO:H03	1/2" 3/4" 1" 1-1/4" 1-1/2" 2"



PP FEMALE COUPLING	SPECIFICATION
ITEM NO:H04	1/2" 3/4" 1" 1 1/4" 1 1/2" 2"



PP ELBOW WITH BRASS	SPECIFICATION
ITEM NO:H05	1/2"



PP FEMALE BEND	SPECIFICATION
ITEM NO:H06	3/4"



PP FEMALE REDUCER	SPECIFICATION
ITEM NO:H07	3/4"x1/2" 1"x1/2" 1"x3/4"



PP NIPPLE	SPECIFICATION
ITEM NO:H08	1/2" 3/4" 1" 1-1/4" 1-1/2" 2"



PP FEMALE&MALE BEND	SPECIFICATION
ITEM NO:H09	1/2" 3/4" 1"



PP FEMALE&MALE ELBOW	SPECIFICATION
ITEM NO:H10	1/2" 3/4" 1" 1-1/4" 1-1/2" 2"



PP FEMALE&MALE ADAPTER	SPECIFICATION
ITEM NO:H11	3/4"x1/2" 1"x1/2" 1"x3/4" 1-1/4"x3/4" 1-1/4"x1" 1-1/2"x1-1/4" 1-1/2"x3/4" 1-1/2"x1" 2"x1" 2"x1-1/4" 2"x1-1/2"



PP MALE PLUG	SPECIFICATION
ITEM NO:H12	1/2" 3/4" 1" 1-1/4" 1-1/2" 2"



PP MALE REDUCER	SPECIFICATION
ITEM NO:H13	3/4"x1/2" 1"x1/2" 1"x3/4"



PP FEMALE CAP	SPECIFICATION
ITEM NO:H14	1/2" 3/4" 1" 1-1/4" 1-1/2" 2"



LONG NIPPLE	SPECIFICATION
ITEM NO:H15	1/2"x6cm 3/4"x6cm 1"x6cm 1-1/4"x10cm 1-1/2"x10cm 2"x10cm



45°ELBOW	SPECIFICATION
ITEM NO:H16	1/2" 3/4" 1"



FEMALE ELBOW(B)	SPECIFICATION
ITEM NO:H17	1/2" 3/4" 1"



FEMALE TEE(B)	SPECIFICATION
ITEM NO:H18	1/2" 3/4" 1"



REDUCING SPIGOT FEMALE ELBOW	SPECIFICATION
ITEM NO:H19	20x3/4"



DOUBLE SPIGOT	SPECIFICATION
ITEM NO:H20	20mm



TEE SPIGOT	SPECIFICATION
ITEM NO:H21	20mm



PP PIPE	SPECIFICATION
ITEM NO:H22	1/2"x3.4 3/4"x3.9 1"x4.9 1-1/4"x5.5 1-1/2"x6.9 2"x8.6

PVC VALVES SERIES



PVC COMPACT BALL VALVE	SPECIFICATION
ITEM NO:E01	1/2" 3/4" 1"
END CONNECTOR:SOCKET THREAD	1-1/4" 1-1/2" 2"
STANDARD:DIN ANSI BS	2-1/2" 3" 4"



PVC OCTAGONAL BALL VALVE	SPECIFICATION
ITEM NO:E02	1/2" 3/4" 1"
END CONNECTOR:SOCKET THREAD	1-1/4" 1-1/2" 2"
STANDARD:DIN ANSI BS	2-1/2" 3" 4"



PVC DOUBLE UNION BALL VALVE	SPECIFICATION
ITEM NO:E03	1/2" 3/4" 1" 1-1/4"
END CONNECTOR:SOCKET	1-1/2" 2" 2-1/2" 3" 4"
STANDARD:DIN ANSI BS	



PVC SINGLE UNION BALL VALVE	SPECIFICATION
ITEM NO:E04	1/2" 3/4" 1" 1-1/4"
END CONNECTOR:SOCKET	1-1/2" 2" 2-1/2" 3" 4"
STANDARD:DIN ANSI BS	



PVC FOOT VALVE	SPECIFICATION
ITEM NO:E05	3/4" 1" 1-1/4" 1-1/2" 2"
END CONNECTOR:SOCKET THREAD	2-1/2" 3" 4" 5" 6" 8"
STANDARD:DIN ANSI BS	



PVC CHECK VALVE	SPECIFICATION
ITEM NO:E06	1/2" 3/4" 1"
END CONNECTOR:SOCKET	1-1/4" 1-1/2" 2"
STANDARD:DIN ANSI BS	2-1/2" 3" 4" 5" 6" 8"



PVC BUTTERFLY VALVE (HANDLE LEVERTYPE)	SPECIFICATION
ITEM NO:E07	
END CONNECTOR:FLANGE	2" 2-1/2" 3" 4"
STANDARD:DIN ANSI BS	5" 6" 8"



PVC MINI BALL VALVE	SPECIFICATION
ITEM NO:E08	
END CONNECTOR:SOCKET THREAD	20 40 25 50
STANDARD:DIN	32 63



PVC CHECK VALVE	SPECIFICATION
ITEM NO:E09	
END CONNECTOR:THREAD SOCKET	3/4" 1"
STANDARD:DIN ANSI BS	



PVC FOOT VALVE	SPECIFICATION
ITEM NO:E10	
END CONNECTOR:THREAD SOCKET	3/4" 1"
STANDARD:DIN ANSI BS	

CPVC VALVES AND FITTINGS SERIES





SOCKET	SPECIFICATION
ITEM NO:M01	1/2" 3/4" 1" 1-1/4" 1-1/2" 2"



90° DEG ELBOW	SPECIFICATION
ITEM NO:M02	1/2" 3/4" 1" 1-1/4" 1-1/2" 2"



STRAIGHT TEE	SPECIFICATION
ITEM NO:M03	1/2" 3/4" 1" 1-1/4" 1-1/2" 2"



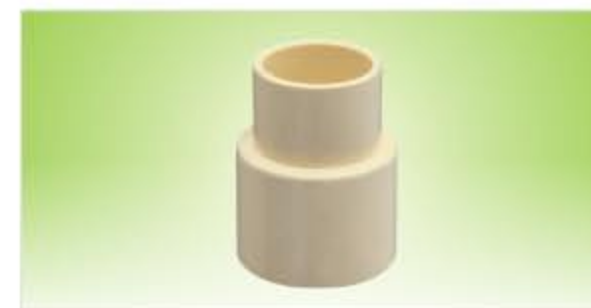
45° DEG ELBOW	SPECIFICATION
ITEM NO:M04	1/2" 3/4" 1" 1-1/4" 1-1/2" 2"



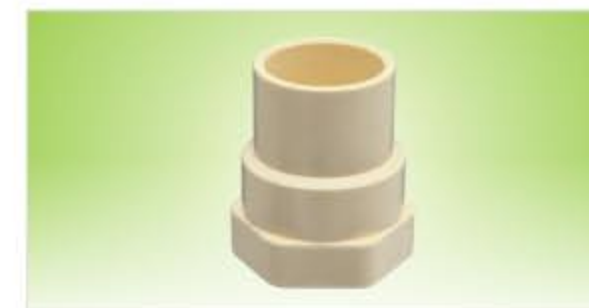
MALE ADAPTOR	SPECIFICATION
ITEM NO:M05	1/2" 3/4" 1" 1-1/4" 1-1/2" 2"



REDUCING BUSH	SPECIFICATION
ITEM NO:M06	3/4" x 1/2" 1" x 1/2" 1" x 3/4"



REDUCING SOCKET	SPECIFICATION
ITEM NO:M07	3/4"x1/2" 1"x1/2" 1"x3/4"



FEMALE ADAPTOR	SPECIFICATION
ITEM NO:M08	1/2" 3/4" 1" 1-1/4" 1-1/2" 2"



UNION	SPECIFICATION
ITEM NO:M09	1/2" 3/4" 1" 1-1/4" 1-1/2" 2"



REDUCING TEE	SPECIFICATION
ITEM NO:M10	3/4"x1/2" 1"x1/2" 1"x3/4"



END CAP	SPECIFICATION
ITEM NO:M11	1/2" 3/4" 1" 1-1/4" 1-1/2" 2"



BRASS THREADED MALE ADAPTOR	SPECIFICATION
ITEM NO:M12	1/2" 3/4" 1" 1-1/4" 1-1/2" 2"



BRASS THREADED FEMALE ELBOW	SPECIFICATION
ITEM NO:M13	1/2" 3/4" 3/4" x 1/2" 1" x 1/2"



BRASS THREADED FEMALE ADAPTOR	SPECIFICATION
ITEM NO:M14	1/2" 3/4" 1" 3/4"x1/2" 1"x1/2"



BRASS THREADED FEMALE TEE	SPECIFICATION
ITEM NO:M15	1/2" 3/4" x 1/2" 1" x 1/2"



BRASS THREADED MALE TEE	SPECIFICATION
ITEM NO:M16	1/2" 3/4" x 1/2" 1" x 1/2"



CPVC COMPACT BALL VALVE CPVC	SPECIFICATION
ITEM NO:M17	1/2" 3/4" 1" 1-1/4" 1-1/2" 2"



TANK COUPLING	SPECIFICATION
ITEM NO:M18	1/2" 3/4" 1" 1-1/4" 1-1/2" 2"



FEMALE COUPLING (COPPER THREAD)	SPECIFICATION
ITEM NO:M19	1/2" 3/4" 1" 1-1/4" 1-1/2" 2"



MALE COUPLING (COPPER THREAD)	SPECIFICATION
ITEM NO:M20	1/2" 3/4" 1" 1-1/4" 1-1/2" 2"



CPVC PIPE	SPECIFICATION
ITEM NO:M15	1/2" 3/4" 1" 1-1/4" 1-1/2" 2"

PPR PIPE AND FITTINGS SERIES





COUPLING	SPECIFICATION
ITEM NO:B01 STANDARD:DIN	20 25 32 40 50 63 75 90 110



90DEG ELBOW	SPECIFICATION
ITEM NO:B02 STANDARD:DIN	20 25 32 40 50 63 75 90 110



MALE ELBOW	SPECIFICATION
ITEM NO:B10 STANDARD:DIN	20x1/2" 20x3/4" 25x1/2" 25x3/4" 32x1/2" 32x3/4" 32x1" 40x1-1/4" 50x1-1/2" 63x2"



REDUCING TEE	SPECIFICATION
ITEM NO:B11 STANDARD:DIN	25x20" 25 32x20" 32 32x25" 32 40x20" 40 40x25" 40 50x20" 50 50x25" 50 63x20" 63 63x25" 63 63x32" 63 63x40" 63 63x50" 63 75x20" 75 75x25" 75 75x32" 75 75x40" 75 75x50" 75 75x63" 75



45DEG ELBOW	SPECIFICATION
ITEM NO:B03 STANDARD:DIN	20 25 32 40 50 63 75 90 110



TEE	SPECIFICATION
ITEM NO:B04 STANDARD:DIN	20 25 32 40 50 63 75 90 110



UNION	SPECIFICATION
ITEM NO:B12 STANDARD:DIN	20 25 32 40 50 63



FEMALE TEE	SPECIFICATION
ITEM NO:B13 STANDARD:DIN	20x1/2" 20x3/4" 25x1/2" 25x3/4" 32x1/2" 32x3/4" 32x1" 40x1-1/4" 50x1-1/2" 63x2"



CAP	SPECIFICATION
ITEM NO:B06 STANDARD:DIN	20 25 32 40 50 63 75



FEMALE COUPLING	SPECIFICATION
ITEM NO:B07 STANDARD:DIN	20x1/2" 25x1/2" 25x3/4" 32x1/2" 32x3/4" 32x1" 40x1-1/4" 50x1-1/2" 63x2"



MALE TEE	SPECIFICATION
ITEM NO:B14 STANDARD:DIN	20x1/2" 20x3/4" 25x1/2" 25x3/4" 32x1/2" 32x3/4" 32x1" 40x1-1/4" 50x1-1/2" 63x2"



MALE UNION	SPECIFICATION
ITEM NO:B15 STANDARD:DIN	20x1/2"M 25x3/4"M 32x1"M 40x1"-1/4"M 50x1-1/2"M 63x2"M



MALE COUPLING	SPECIFICATION
ITEM NO:B08 STANDARD:DIN	20x1/2" 25x1/2" 25x3/4" 32x1/2" 32x3/4" 32x1" 40x1-1/4" 50x1-1/2" 63x2"



FEMALE ELBOW	SPECIFICATION
ITEM NO:B09 STANDARD:DIN	20x1/2" 20x3/4" 25x1/2" 25x3/4" 32x1/2" 32x3/4" 32x1" 40x1-1/4" 50x1-1/2" 63x2"



FEMALE UNION	SPECIFICATION
ITEM NO:B16 STANDARD:DIN	20x1/2"F 25x3/4"F 32x1"F 40x1"-1/4"F 50x1-1/2"F 63x2"F



REDUCING SOCKET	SPECIFICATION
ITEM NO:B17 STANDARD:DIN	S25x20 S40x25 S50x40 S63x40 S32x20 S40x32 S63x20 S63x50 S32x25 S50x25 S63x25 S40x20 S50x32 S63x32



BALL VALVE	SPECIFICATION
ITEM NO: B18 STANDARD: DIN	20 40 25 50 32 63



STOP VALVE	SPECIFICATION
ITEM NO: B20 STANDARD: DIN	20 25 32



CONCEALED VALVE	SPECIFICATION
ITEM NO: B22 STANDARD: DIN	20 25 32



HEAVY STOP VALVE	SPECIFICATION
ITEM NO: B23 STANDARD: DIN	20 25 32 40 50 63



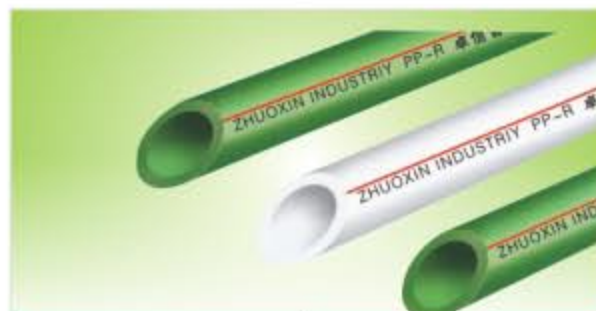
TRUE UNION BALL COCK	SPECIFICATION
ITEM NO: B24 STANDARD: DIN	20 40 25 50 32 63



MALE BRASS BALL COCK	SPECIFICATION
ITEM NO: B25 STANDARD: DIN	20x1/2"M 25x3/4"M 32x1"M



WELDING MACHINE	SPECIFICATION
ITEM NO: B30 STANDARD: DIN	20-32 20-63



PPR PIPE	

PVC STANDARD WATER SUPPLY FITTING SERIES(DIN)





COUPLING	SPECIFICATION
ITEM NO:K01 STANDARD:DIN	φ 20 φ 40 φ 75 φ 125 φ 250 φ 25 φ 50 φ 90 φ 160 φ 315 φ 32 φ 63 φ 110 φ 200



45 DEG ELBOW	SPECIFICATION
ITEM NO:K02 STANDARD:DIN	φ 20 φ 40 φ 75 φ 125 φ 250 φ 25 φ 50 φ 90 φ 160 φ 315 φ 32 φ 63 φ 110 φ 200



CROSS	SPECIFICATION
ITEM NO:K07 STANDARD:DIN	φ 20 φ 25 φ 32



REDUCING BUSHING	SPECIFICATION
ITEM NO:K08 STANDARD:DIN	φ 25x20 φ 40x32 φ 63x20 φ 32x20 φ 50x20 φ 63x25 φ 32x25 φ 50x25 φ 63x32 φ 40x20 φ 50x32 φ 63x40 φ 40x25 φ 50x40 φ 63x50



90 DEG ELBOW	SPECIFICATION
ITEM NO:K03 STANDARD:DIN	φ 20 φ 40 φ 75 φ 125 φ 250 φ 25 φ 50 φ 90 φ 160 φ 315 φ 32 φ 63 φ 110 φ 200



TEE	SPECIFICATION
ITEM NO:K04 STANDARD:DIN	φ 20 φ 40 φ 75 φ 125 φ 250 φ 25 φ 50 φ 90 φ 160 φ 315 φ 32 φ 63 φ 110 φ 200



FEMALE TEE	SPECIFICATION
ITEM NO:K09 STANDARD:DIN	φ 20 φ 25x20 φ 25 φ 32x20 φ 32 φ 32x25



FEMALE COUPLING	SPECIFICATION
ITEM NO:K10 STANDARD:DIN	φ 20 φ 25x20 φ 25 φ 32x20 φ 32 φ 32x25



REDUCING COUPLING	SPECIFICATION
ITEM NO:K05 STANDARD:DIN	φ 25x20 φ 50x25 φ 63x25 φ 75x25 φ 90x25 φ 110x25 φ 125x25 φ 150x25 φ 160x25 φ 175x25 φ 200x25 φ 250x20 φ 25x20 φ 50x25 φ 63x25 φ 75x25 φ 90x25 φ 110x25 φ 125x25 φ 150x25 φ 160x25 φ 175x25 φ 200x25 φ 250x20 φ 25x20 φ 50x25 φ 63x25 φ 75x25 φ 90x25 φ 110x25 φ 125x25 φ 150x25 φ 160x25 φ 175x25 φ 200x25 φ 250x20 φ 25x20 φ 50x25 φ 63x25 φ 75x25 φ 90x25 φ 110x25 φ 125x25 φ 150x25 φ 160x25 φ 175x25 φ 200x25 φ 250x20



REDUCING ELBOW	SPECIFICATION
ITEM NO:K06 STANDARD:DIN	φ 25x20 φ 50x25 φ 32x20 φ 50x32 φ 32x25



FEMALE ELBOW (THREAD COPPER)	SPECIFICATION
ITEM NO:K11 STANDARD:DIN	φ 20 φ 25x20 φ 25 φ 32x20 φ 32 φ 32x25



FEMALE TEE(COPPER THREAD)	SPECIFICATION
ITEM NO:K12 STANDARD:DIN	φ 20 φ 25x20 φ 25 φ 32x20 φ 32 φ 32x25



COMPRESSION COUPLING	SPECIFICATION
ITEM NO:K13	φ20 φ40 φ75
STANDARD:DIN	φ25 φ50 φ90
	φ32 φ63 φ110



REDUCING TEE	SPECIFICATION
ITEM NO:K15 STANDARD:DIN	φ20x20 φ32x20 φ40x20 φ50x20 φ63x20 φ75x20 φ90x20 φ110x20 φ125x20 φ150x20 φ160x20 φ200x20
	φ20x25 φ32x25 φ40x25 φ50x25 φ63x25 φ75x25 φ90x25 φ110x25 φ125x25 φ150x25 φ160x25 φ200x25
	φ20x32 φ32x32 φ40x32 φ50x32 φ63x32 φ75x32 φ90x32 φ110x32 φ125x32 φ150x32 φ160x32 φ200x32
	φ20x40 φ32x40 φ40x40 φ50x40 φ63x40 φ75x40 φ90x40 φ110x40 φ125x40 φ150x40 φ160x40 φ200x40
	φ20x50 φ32x50 φ40x50 φ50x50 φ63x50 φ75x50 φ90x50 φ110x50 φ125x50 φ150x50 φ160x50 φ200x50
	φ20x63 φ32x63 φ40x63 φ50x63 φ63x63 φ75x63 φ90x63 φ110x63 φ125x63 φ150x63 φ160x63 φ200x63
	φ20x75 φ32x75 φ40x75 φ50x75 φ63x75 φ75x75 φ90x75 φ110x75 φ125x75 φ150x75 φ160x75 φ200x75
	φ20x90 φ32x90 φ40x90 φ50x90 φ63x90 φ75x90 φ90x90 φ110x90 φ125x90 φ150x90 φ160x90 φ200x90
	φ20x110 φ32x110 φ40x110 φ50x110 φ63x110 φ75x110 φ90x110 φ110x110 φ125x110 φ150x110 φ160x110 φ200x110
	φ20x125 φ32x125 φ40x125 φ50x125 φ63x125 φ75x125 φ90x125 φ110x125 φ125x125 φ150x125 φ160x125 φ200x125
	φ20x150 φ32x150 φ40x150 φ50x150 φ63x150 φ75x150 φ90x150 φ110x150 φ125x150 φ150x150 φ160x150 φ200x150
	φ20x160 φ32x160 φ40x160 φ50x160 φ63x160 φ75x160 φ90x160 φ110x160 φ125x160 φ150x160 φ160x160 φ200x160



UNION	SPECIFICATION
ITEM NO:K20	20 25 32 40 50 63
STANDARD:DIN	



FEMALE ELBOW	SPECIFICATION
ITEM NO:K21	20 25x20
STANDARD:DIN	25 32x20
	32 32x25



MALE PLUG	SPECIFICATION
ITEM NO:K16	φ20 φ20(Rubber ring)
STANDARD:DIN	φ25 φ32



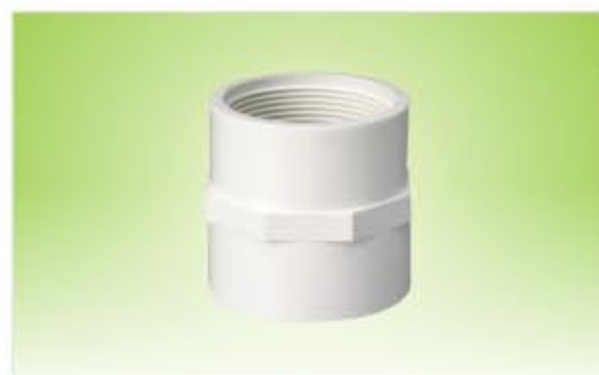
CAP	SPECIFICATION
ITEM NO:K17	φ20 φ50 φ110
STANDARD:DIN	φ25 φ63 φ125
	φ32 φ75 φ160
	φ40 φ90 φ200



FLANGE	SPECIFICATION
ITEM NO:K22	φ50 φ110 φ250
STANDARD:DIN	φ63 φ125 φ315
	φ75 φ160
	φ90 φ200



PVC PIPE	SPECIFICATION
ITEM NO:K23	20 25 32 40 50 63
STANDARD:DIN	75 90 110



FEMALE ADAPTER	SPECIFICATION
ITEM NO:K18	φ20 φ63 φ25x20
STANDARD: DIN	φ25 φ75 φ32x20
	φ32 φ90 φ32x25
	φ40 φ110 φ50x25
	φ50



MALE ADAPTER	SPECIFICATION
ITEM NO:K19	φ20 φ40 φ75
STANDARD:DIN	φ25 φ50 φ90
	φ32 φ63 φ110

PVC DRAINAGE FITTINGS SERIES(DIN)



DWV COUPLER	SPECIFICATION
ITEM NO:W01 STANDARD:DIN	50 75 110 160 200



DWV 45DEG ELBOW	SPECIFICATION
ITEM NO:W02 STANDARD:DIN	50 75 110 160 200



DWV 90DEG TEE	SPECIFICATION
ITEM NO:W03 STANDARD:DIN	50 75 110 160 200



DWV TEE	SPECIFICATION
ITEM NO:W04 STANDARD:DIN	50 75 110 160 200



DWV Y-TEE	SPECIFICATION
ITEM NO:W05 STANDARD:DIN	50 75 110 160



DWV P-TRAP WITH PORT	SPECIFICATION
ITEM NO:W06 STANDARD:DIN	50 75 110



DWV REDUCING BUSHING	SPECIFICATION
ITEM NO:W07 STANDARD:DIN	50x75 110x50 110x75 160x110 200x110 200x160



DWV ELBOW WITH PORT	SPECIFICATION
ITEM NO:W08 STANDARD:DIN	50 75 110 160



DWV H-PIPE	SPECIFICATION
ITEM NO:W15 STANDARD:DIN	50 75 110 160



HIGH-DEEP SQUARE FLOOR DRAIN	SPECIFICATION
ITEM NO:W16 STANDARD:DIN	50 75 110



DWV REDUCING TEE	SPECIFICATION
ITEM NO:W09 STANDARD:DIN	50x75 110x50 110x75 160x110 200x110 200x160



DWV REDUCING SKEW TEE	SPECIFICATION
ITEM NO:W10 STANDARD:DIN	75x50 110x50 110x75



EXTENSION JOINT	SPECIFICATION
ITEM NO:W17 STANDARD:DIN	50 75 110 160 200



DWV S-TRAP	SPECIFICATION
ITEM NO:W18 STANDARD:DIN	50 75 110



BOTTLE NECK TEE	SPECIFICATION
ITEM NO:W11 STANDARD:DIN	110x50 110x75



DWV TRIPPLE	SPECIFICATION
ITEM NO:W12 STANDARD:DIN	75 110 160



ELBOW	SPECIFICATION
ITEM NO:W19 STANDARD:DIN	50



TEE	SPECIFICATION
ITEM NO:W20 STANDARD:DIN	50



DWV REDUCING CROSS	SPECIFICATION
ITEM NO:W13 STANDARD:DIN	75x50 110x50 110x75



DWV CLIP	SPECIFICATION
ITEM NO:W14 STANDARD:DIN	50 75 110 160



90°ELBOW WITH RUBBER	SPECIFICATION
ITEM NO:W21 STANDARD:DIN	110

PP COMPRESSION FITTINGS SERIES



PP COMPRESSION FITTINGS SERIES



PP ADDING EXIT	SPECIFICATION
ITEM NO:F01	25 32 40 50 63 75 90 110 125 160 200 250



PP COUPLING	SPECIFICATION
ITEM NO:F02	20 25 32 40 50 63 75 90 110



PP 90DEG ELBOW	SPECIFICATION
ITEM NO:F03	20 25 32 40 50 63 75 90 110



PP ELBOW WALL PLATED	SPECIFICATION
ITEM NO:F04	20 25 32 40 50 63 75 90 110



PP END CAP	SPECIFICATION
ITEM NO:F05	20 25 32 40 50 63 75 90 110



PP FEMALE ADAPTER	SPECIFICATION
ITEM NO:F06	20x1/2" 20x3/4" 25x1/2" 25x3/4" 25x1" 32x1" 40x1-1/4" 50x1-1/2" 63x2" 75x2-1/2" 90x3" 110x4"



PP FEMALE ELBOW	SPECIFICATION
ITEM NO:F07	20x1/2" 25x3/4" 32x1" 40x1-1/4" 50x1-1/2" 63x1-1/2" 63x2" 75x2" 75x2-1/2" 90x3" 110x4"



PP FEMALE TEE	SPECIFICATION
ITEM NO:F08	20x1/2" 25x3/4" 25x1/2" 25x3/4" 25x1" 32x3/4" 32x1" 40x1" 40x1-1/4" 50x1-1/2" 63x1-1/2" 63x2" 75x2-1/2" 90x3" 110x4"



PP MALE TEE	SPECIFICATION
ITEM NO:F09	20 25 32 40 50 63 75 90 110



FLANGE	SPECIFICATION
ITEM NO:F10	40x1-1/2" 50x1-1/2" 50x2" 63x2" 63x2-1/2" 75x2-1/2" 75x3" 90x3" 90x4" 110x4"



PP MALE ADAPTER	SPECIFICATION
ITEM NO:F11	20 25 32 40 50 63 75 90 110



PP TEE	SPECIFICATION
ITEM NO:F12	20 25 32 40 50 63 75 90 110



PP REDUCING COUPLING	SPECIFICATION
ITEM NO:F13	25x20 32x20 32x25 40x25 40x32 50x25 50x32 50x40 63x32 63x40 63x50 75x50 75x63 90x63 90x75 110x90



PP MALE ELBOW	SPECIFICATION
ITEM NO:F14	20x1/2" 25x3/4" 32x1" 40x1-1/4" 50x1-1/2" 63x2" 75x2-1/2" 90x3" 110x4"



PP REDUCING TEE	SPECIFICATION
ITEM NO:F15	25x20x25 32x20x32 32x25x32 40x25x40 40x32x40 50x25x50 50x32x50 50x40x50 63x50x63 75x50x75 75x63x75 90x63x90 90x75x90 110x90x110



MALE COUPLING	SPECIFICATION
ITEM NO: T01	1/2"



MALE AND FEMALE COUPLING	SPECIFICATION
ITEM NO: T02	1/2"



MALE 90 ELBOW	SPECIFICATION
ITEM NO: T03	1/2"



MALE AND FEMALE ELBOW	SPECIFICATION
ITEM NO: T04	1/2"



MALE TEE	SPECIFICATION
ITEM NO: T05	1/2"



MALE AND FEMALE TEE	SPECIFICATION
ITEM NO: T06	1/2"



STOP COCKS(MALE)	SPECIFICATION
ITEM NO: T07	1/2" 3/4"



STOP COCKS(FEMALE)	SPECIFICATION
ITEM NO: T08	1/2" 3/4"



HOSE TAP	SPECIFICATION
ITEM NO: T09	1/2" 3/4"



CHROME STOP VALVE	SPECIFICATION
ITEM NO: T10	1/2"



SPRING CHECK VALVE	SPECIFICATION
ITEM NO: T11	3/4" 1"



GATE CHECK VALVE	SPECIFICATION
ITEM NO: T12	3/4" 1"



ITEM NO: ZX8001
MATERIAL: PP

ITEM NO: ZX8002
MATERIAL: PVC

ITEM NO: ZX8012
MATERIAL: PP PVC



ITEM NO: ZX8021
MATERIAL: PP PVC

ITEM NO: ZX8092
MATERIAL: PVC ABS

ITEM NO: ZX8032
MATERIAL: PP

ITEM NO: ZX8052
MATERIAL: ABS



ITEM NO: ZX8055
MATERIAL: PP ABS

ITEM NO: ZX8060
MATERIAL: PVC

ITEM NO: ZX8061
MATERIAL: PVC

ITEM NO: ZX8062
MATERIAL: PVC



ITEM NO: ZX8063
MATERIAL: PVC

ITEM NO: ZX8066
MATERIAL: PVC

ITEM NO: ZX8090
MATERIAL: ABS PVC

ITEM NO: ZX8091
MATERIAL: ABS